



**WE VALUE
NATURE**

10-DAY CHALLENGE

11–24 March 2021

Events and activities for
naturally-smarter businesses



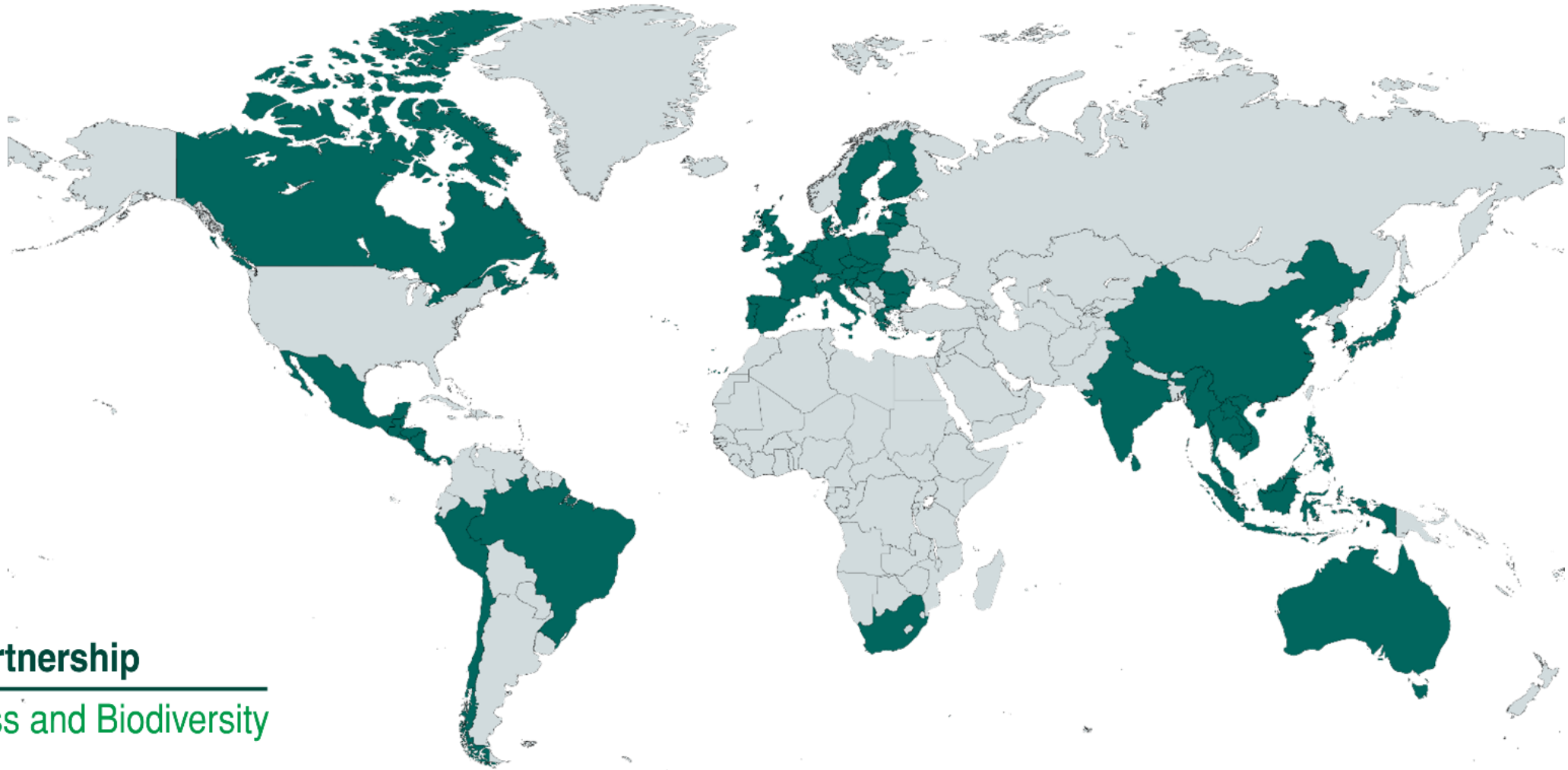
Global Partnership

for Business and Biodiversity





Convention on
Biological Diversity



Global Partnership
for Business and Biodiversity

For more information: www.cbd.int/gp





Iniciativa Brasileira de Negócios e Biodiversidade



Business and biodiversity has a long relation in Brazil history.

André Rebouças

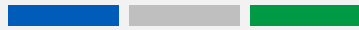
Brazilian engineer and businessman

Suggested the creation of our first National Park.

In **1876**



COMMITMENT FOR BIODIVERSITY



Find more: ibnbio.org



Conservation and knowledge

Support to protected areas and development of biodiversity protection projects and educational actions.

- Maintenance of areas dedicated to the preservation and research.
- Harpy Breeding Program, one of the largest hawks in the world and which is threatened with extinction.
- Responsible for the birth of 50 puppies.



Best practices through value chain

Forward Farming promoting best agricultural practices in order to combine higher productivity with environmental protection and social responsibility.

Ensure that products can be used safely: for both the farmer and the environment, always ensuring that farmers have the knowledge and understanding needed to achieve these goals.



With communities

Committed to developing sustainable and inclusive economic alternatives for the Amazon, since 2000.

The program operates on three main pillars: Science, Technology and Innovation; Productive Chains; and Institutions

Relationship with 37 supplier communities, covering 5,624 families.



How have **companies** been contributing to the global **Biodiversity** goals?

CONFIRA A PUBLICAÇÃO

COMO AS EMPRESAS VEM CONTRIBUINDO PARA AS METAS GLOBAIS DE BIODIVERSIDADE?

Análise de respostas públicas das
empresas associadas ao CEBDS

COMO AS EMPRESAS VEM
CONTRIBUINDO PARA AS METAS
GLOBAIS DE BIODIVERSIDADE?
Análise de respostas públicas das
empresas associadas ao CEBDS



Corporate policies
related to biodiversity



Methods for
identification and risk
assessment



Biodiversity impacts'
identification



Recovery of degraded
areas



Biodiversity impacts'
management



The Environmental
Rural Registry (CAR)



Data collection on
endangered species



Maintenance of
protected areas



Affected and preserved
biomes



Actions for the
sustainable consumption
or use of its
products



Constrains to including
biodiversity in corporate
management



Monitoring the
environmental
performance of the
supply chain



How have **companies** been contributing to the global **Biodiversity goals**?

CONFIRA A PUBLICAÇÃO

COMO AS EMPRESAS VEM
CONTRIBUINDO PARA AS METAS
GLOBAIS DE BIODIVERSIDADE?

Análise de respostas públicas das
empresas associadas ao CEBDS

COMO AS EMPRESAS VEM
CONTRIBUINDO PARA AS METAS
GLOBAIS DE BIODIVERSIDADE?
Análise de respostas públicas das
empresas associadas ao CEBDS



- 92% implement **corporate policies** that include issues related to biodiversity
- In the past five years, their effort resulted in more than 300,000 hectares of land on **recovery**
- Maintenance of Protected Areas, adding more than **15 million hectares**.
- 67% of the companies take actions directed to the consumer targeting the **sustainable consumption or use** of their products or services

Avenida Almirante
Barroso, 81, 32º Andar
Torre Almirante
Centro – Rio de Janeiro
– RJ
CEP: 20231-004
Tel: +55 21 2483-2250



cebds

Vale & Biodiversity

Letícia Guimarães
leticia.guimaraes@vale.com





2020 Brazilian Business Commitment to Biodiversity



Vale & Biodiversity 2021

<http://www.vale.com/esg/en/Pages/Biodiversity.aspx>





2030 Vale Sustainability Agenda

2030 commitments reviewed for **more ambitious goals**



New targets



Climate change

Reduce greenhouse gas emissions by 46% aligned with the Paris Agreement and be carbon neutral by 2050

New targets



Energy

100% self-generation of clean energy in Brazil globally



Water

Reduce new water collection by 10%

New targets



Forest

Recover and protect 400,000 ha **500,000 ha** of degraded land beyond our boundaries



Socioeconomic contribution

Health care, education and income generation

New targets



ESG gaps

Eliminate main ESG gaps in relation to best practices

Lead the transition to a carbon neutral mining



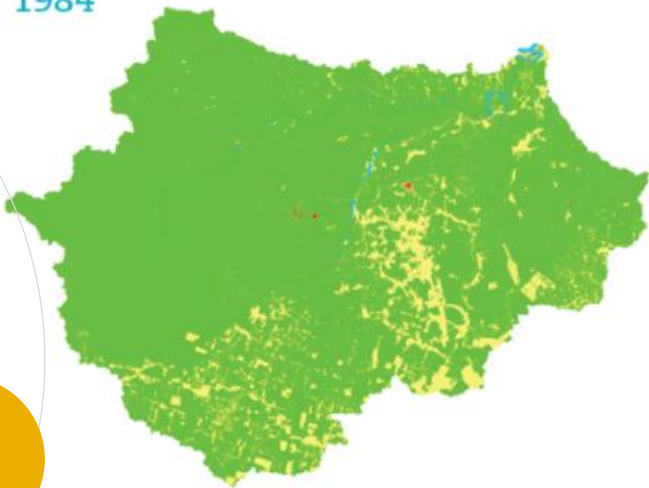
Recover 100.000 ha
Protect 400.000 ha

Partnership for conservation, recovery, local development and income generation

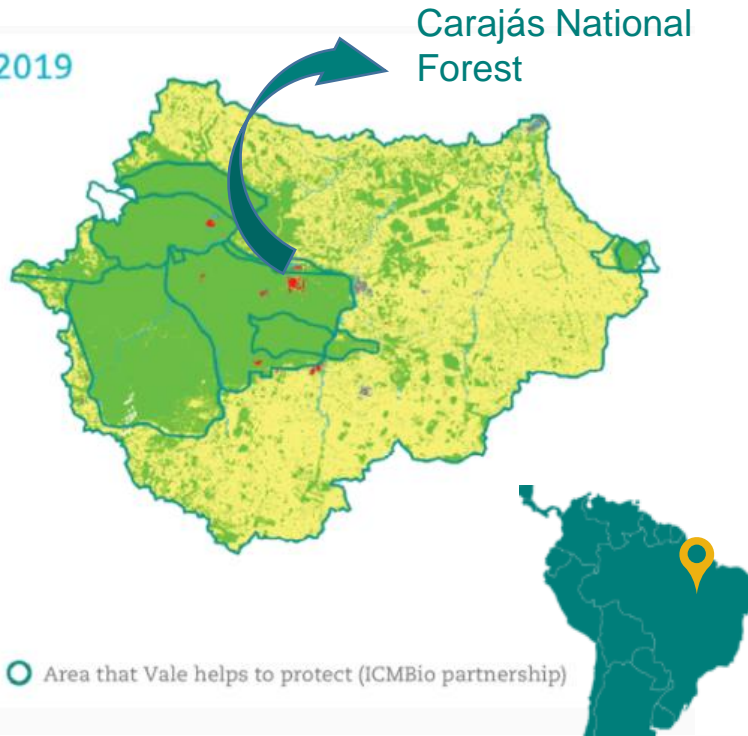
We help to protect 905.465 ha

11 times larger than the area occupied by our operations

1984



2019



● Native forest ● Degraded areas ● Vale's operations ● Urban area ● Area that Vale helps to protect (ICMbio partnership)

INSTITUTO TECNOLÓGICO VALE

R\$402 million

Invested in research



600

published scientific articles



Partnerships for conservation, restoration and generation of shared value

INSTITUTO TECNOLÓGICO VALE

VALE FUNDO VALE

ISES INSTITUTO DE SOCIOECONOMIA SÓLIDÁRIA

ICMBio MMA

SETE

COEX - CARAJÁS
Cooperativa Extrativista



“Extractivism is life: we live from the forest and with the forest, we live in harmony with it.”
Ana Paula Ferreira
COEX President

FARMING WITH RESPECT FOR NATURE AND COMMUNITY

nicofrutta 

nicoverde 



WHO WE ARE

- Family business, since 2004
- Pineapple imports, sales to European retailers
- Owned NICOVERDE farm in Costa Rica
- We work with 120 small farmers
- Fair Trade certification



OUR FARM IN COSTA RICA, 30% protected forest



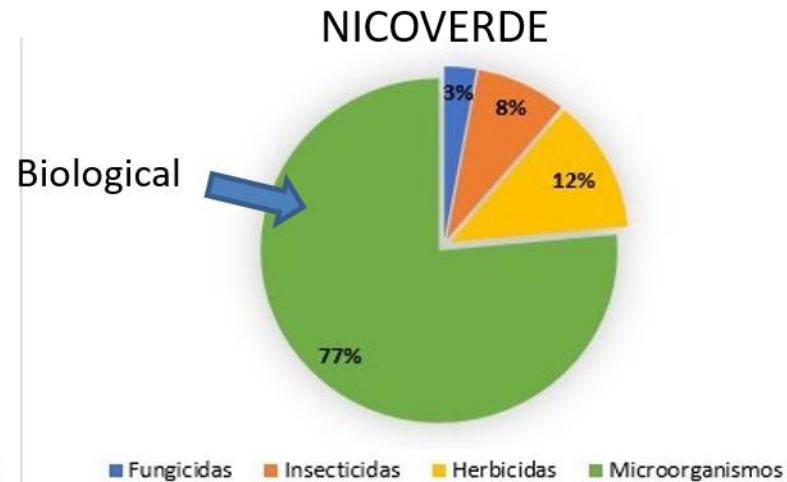
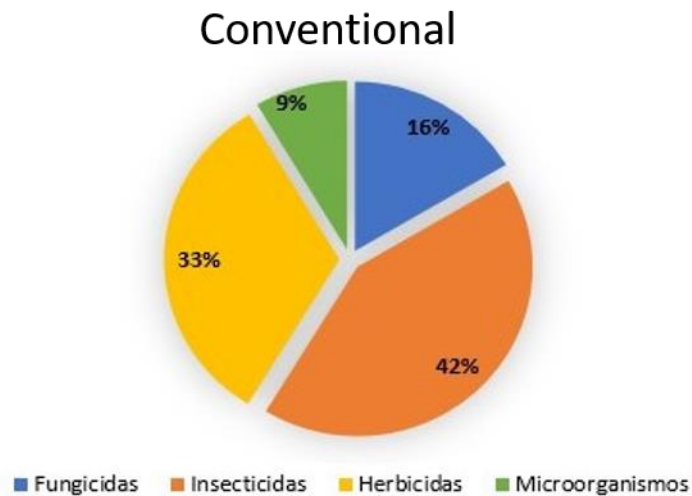
COLLABORATIONS & COMMUNITY

- Our high Standards for all suppliers
 - Quality Standards & Production Protocols
 - Technical Assistance
 - Export Procedures
- New collaborations
 - Cooperatives in C. Rica and Dominican Republic
- BPM – Member and Board
- Training for University students
- COVID prevention procedures
 - For all personnel, first in Latin America
 - Certified



INNOVATIONS

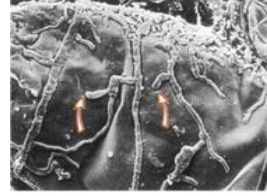
- Organic Phytosanitary Products
- produced In own laboratory (Bacteria & Fungi)
- Drones
- for Product Applications
- 77% Reduction Of Chemicals
- in Pineapple Farming:



Trichoderma sp



Fijadores de nitrógeno



Paecilomyces lilacinus



BIODIVERSITY

Awareness & Conservation

Partnership with GIZ ('Farm to Fork')

Biodiversity Check

- diagnostic tool for Biodiversity planning
- own & supplier farms



Protecting & restoring nature

- our forests, water sources, wildlife
- our soil's biodiversity and fertility
- educating our employees and neighbours



OUR CERTIFICATIONS

External Audits, Credible Performance



OUR VISION FOR THE FUTURE

A better way to grow pineapples

- High quality and productivity
- For farmers: Improved income; a solution for small farmers
- For retailers and consumers: A superior product
- For nature: Biodiversity conservation

Our ambition:

Biodiversity-friendly practices are adopted widely and improved

THANK YOU



nicofrutta 



nicoverde 

FRENCH PLATFORM

TERRITORIES

CIVIL SOCIETY

POLICY

ACADEMICS



FARMERS

NGOs

COMPANIES

BANKING

THE FRENCH CONSTELLATION



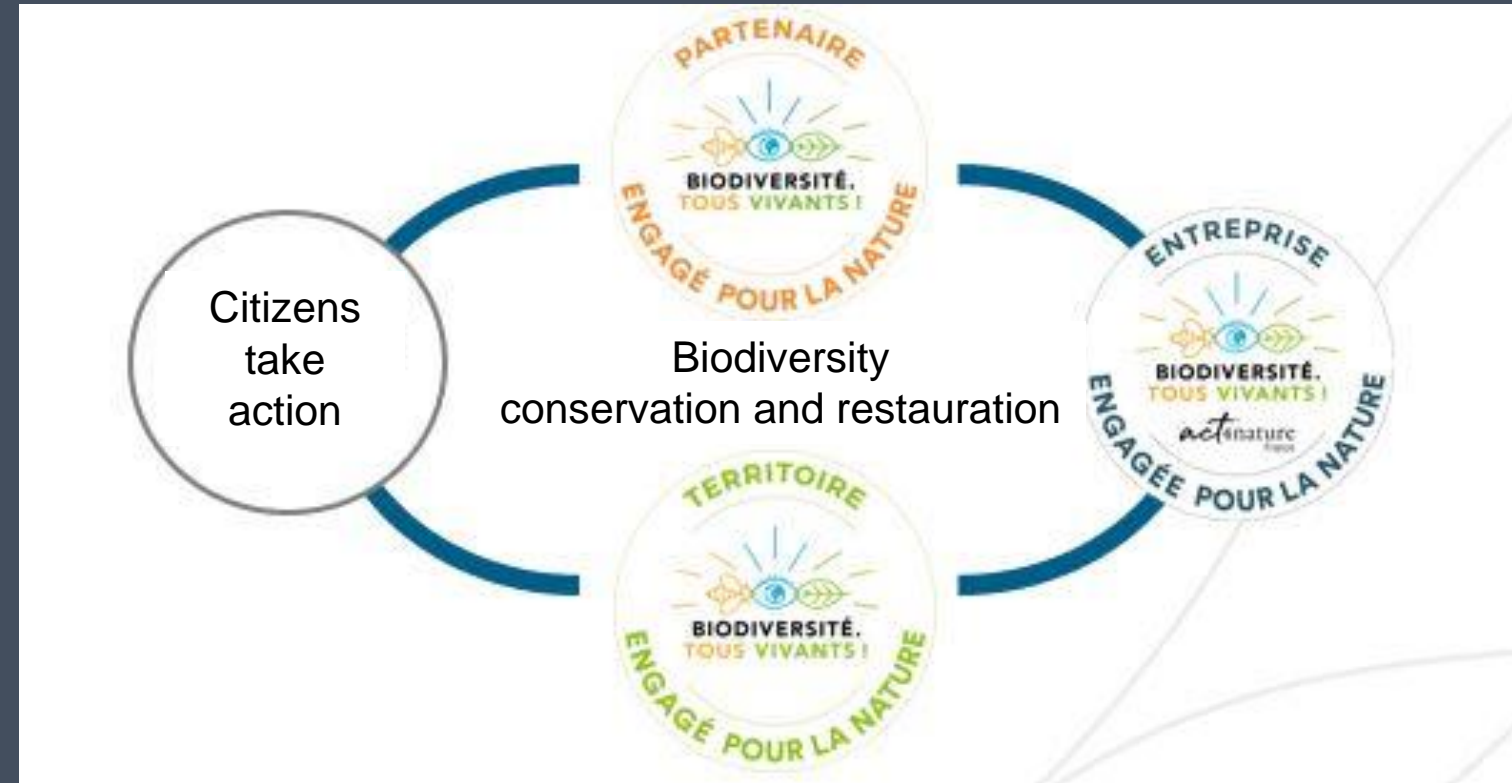
Some examples:



Entreprises engagées pour la nature Act4nature France

3 programs - all stakeholders targeted.

- Significant commitments
- Fair evaluation, Recognition & Promotion
- Best practices sharing, scaling effect



Entreprises engagées pour la nature Act4nature France



**Stakeholders
exchange
groups**

1

Sign up

The CEO signs the 10 common principles



Commitment

A SMART action plan (At least 1
action refers to core activity)

2



Action tools

Assessment

Results of action plan implementation
3 levels

3

4

Commitment renewal

Continuous improvement process

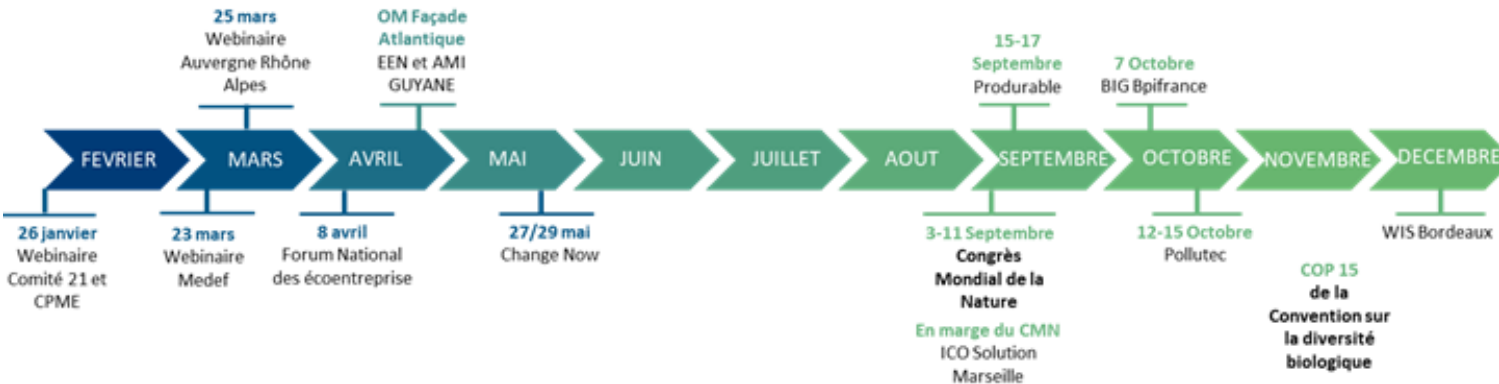


Visibility



Entreprises engagées pour la nature Act4nature France

- Local, national and international meetings to develop the program and trigger commitments





Entreprises engagées pour la nature Act4nature France

They've joined !

- 217 Local communities
- 108 Companies
- 25 NGOs/
Networks





BAROMÈTRE^{GR}
Reconnect people to nature®

Launch 18 March 2021



Plateforme de
l'Initiative Française pour
les Entreprises et la Biodiversité



www.oree.org

Contacts:

Hélène Leriche, H.O. Biodiversity and economy department
in ORÉE

leriche@oree.org

Claude Fromageot, Chair of GPBB

claud.fromageot@yrnet.com



India Business & Biodiversity Initiative



सर्वधर्म सर्वसुखकराणि
Ministry of Environment, Forest
& Climate Change



Confederation of Indian Industry



CII-ITC Centre of Excellence
for Sustainable Development

- Initiated by Ministry of Environment, Forests and Climate Change (MoEFCC)
- Hosted by CII Centre of Excellence for Sustainable Development
- Business led initiative with an objective to mainstream biodiversity in Indian Businesses
- 40 Businesses are signatory to the initiative and 13 stakeholder organizations from various institutions and development organization are member of initiative
- IBBI Business members contributing 4.5% of India's GDP in 2019
- Only national initiative which representing Indian Businesses on biodiversity at Convention on Biological Diversity (CBD)
- Executive member of CBD's Global Partnership for Business and Biodiversity (GPBB)
- Member of CBD's Informal Advisory Group on Mainstreaming Biodiversity



CII-ITC Centre of Excellence for Sustainable Development



Confederation of Indian Industry



adani
Ports and Logistics

adani
Power

adani
Renewables

adani
Transmission



Business Members

Stakeholders

Nurturing Soil for the Future



**Creating Sustainable
Environment for
Smart Agriculture**

- Since 13/09/2000, for last 18 years **BIOCARE (India) Pvt Ltd** has been transforming chemically impacted agriculture land by providing sustainable input

One Farmer and One Farm at a time.

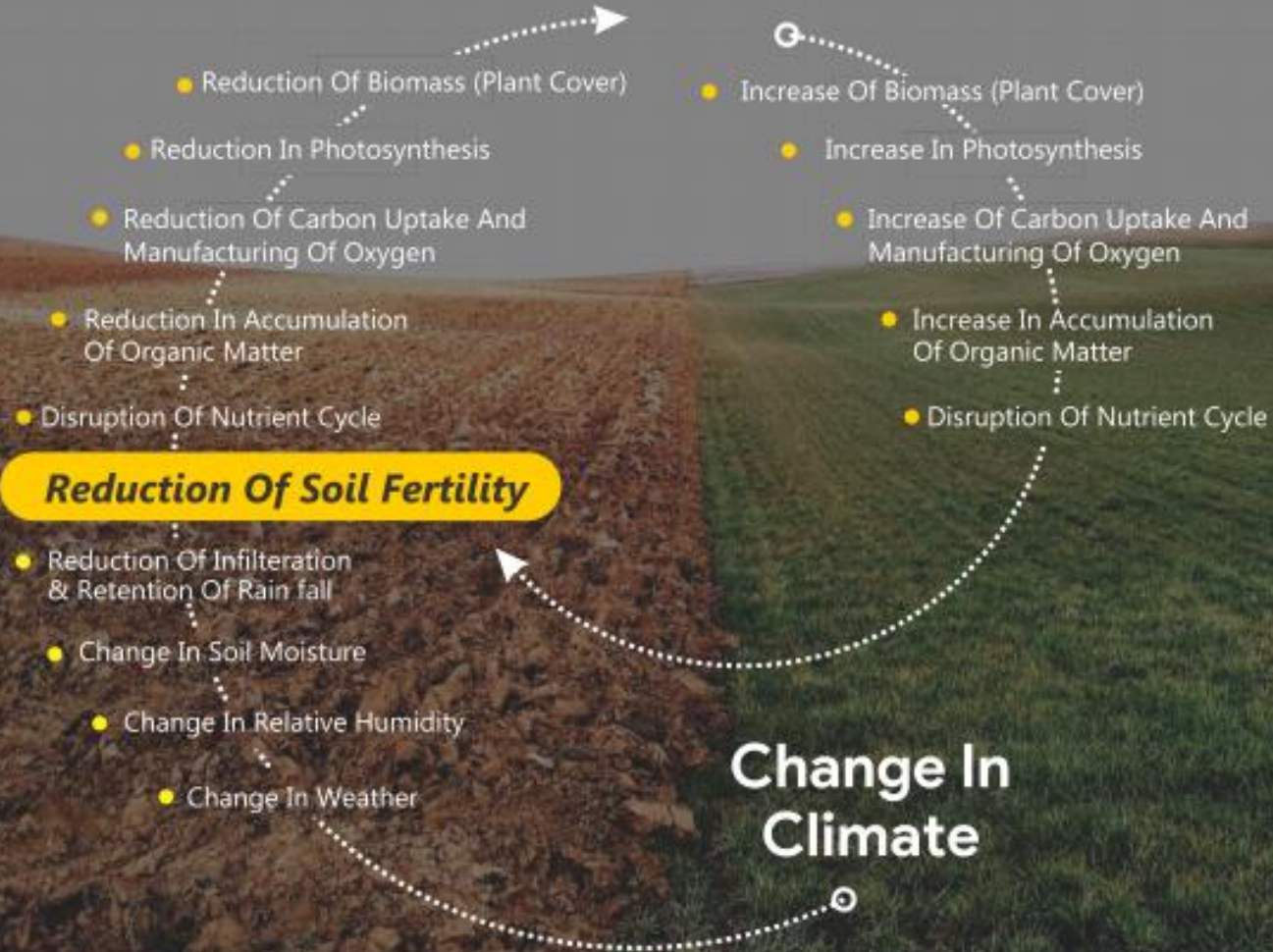
- Biocare believes that bringing the agricultural soil back to its basic form will help in reduction of GHG's and thereby help in adaptation & mitigation of the Climate Change.



Biocare Methodology for Adaptation & Mitigation of Climate Change.

Soil organic carbon (SOC) is one part in the much larger global carbon cycle that involves the cycling of carbon through the soil, vegetation, ocean and the atmosphere

Reduction Of Bio-Diversity



**Healthy soil,
Healthy agriculture,
and Healthy humans**

**BIOCARE is expert
in rebuilding soil
since 2000.**

Depletion of soil organic matter results in drastic decline in productivity.

**Soil can mitigate
climate change**

Soil makes up the greatest pool of terrestrial organic carbon, more than double the amount stored in vegetation.

As well as helping to supply clean water, prevent desertification and provide resilience to flood and drought, soil mitigates climate change through carbon sequestration and reduction of greenhouse gas emissions.

Investing in sustainable soil



Soil are the basis of healthy food production



Soil host a quarter of our planet's biodiversity



Soil help to combat and adapt to climate change



Soil are essential for food security



Soil store and filter water

Ginners are facing supply chain problems due to

- Climate Change
- Pest attack
- Increase in demand for Raw cotton due to increase in number of ginners
- Farmers shifting to other cash crops due to increased input costs

Raw Material Issues

Quality & Quantity of Cotton

Farmers need proper skills in picking, stocking, packing and transporting cotton.

Ginning is an important transfer point in the cotton value chain.

Ginning factories are placed at pivotal position in the cotton value chain.

It acts as bridge between the farmer field and textile industry.

Ginning stage of cotton plays a significant role in determining the quality of raw material for textile and clothing industry.

They are the major clients of the cotton growers and provide raw material to the textile and clothing industry and the oil mills.



Establish point of sale at Ginners facility.

- Provide Genuine Inputs to the farmers associated with the ginning mills – Reduced cost & increased yields.
- Provide field services to farmers in making their soil sustainable through proprietary products. – Reduce Input cost
- Helps in making Soil Organic thereby reducing humidity losses and increasing porosity for nutrient transfer. - More Crop- per drop
- Supports with Biocare Package of Practise to increase yield and quality. – Increase margin

Benefits to Ginners:

- Develops Captive farmers hence assured quantity.
- Gets assured quality crops

Sustainable Commodities

Biocares Proprietary Sustainable Inputs

Biocare Package of Practices

COTTON

RICE

SOYABEAN

PULSES

SPICES



Products
Traceable
to Farms



End to End
Supply-Chain
Management



Creation of
Sustainable
Livelihood



Traceability
to Carbon
Footprint
Reduction

REDUCTION IN IMPACT OF CLIMATE CHANGE

BIOCARE SUSTAINABILITY CENTRE



ORIGINATION

- Crop and soil inputs for quality yield
- Certification of Farms
- Farm management practices for high yield
- Agronomic services with contracts for specified operations developed to reduce market risk for growers.



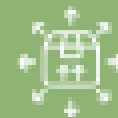
INNOVATION

- Crop Residue Management
- Capacity building
- Creating sustainable villages
- Research and knowledge transfer
- Expose to International market.



PROCESSING

- Harvest handling and management centre
- Certified warehousing facility
- Pre-Processing facility
- Value added processing facility



MARKETING & DISTRIBUTION

- Buy back of farm produce
- Establish regional distribution network
- Online retail and exports

Awards & Recognitions

2010

- International Achievers Award, Bangkok, Thailand
- IFOAM Certification, Germany
- Udyog Bharti Award, New Delhi

2012

- Golden Peacock Award, New Delhi
- NSIC-CRISIL Certification

2013

Business Excellence Award,
District Industry Center

2014

- ASSOCHAM, India Gold Award Certification
- International Achievers Award, Bangkok
- CII Industrial Innovation Award, Bangkok

2015

AXIS Bank India SME Awards
Mumbai, India

2017

Asia's Greatest Brands & Leaders 2017
Pride of Asia Series
Singapore

Bouquet of Services

- Creation & Management of sustainable centres at Crop / Area level
- Sustainable supply chain and sourcing assistance
- Carbon Footprint analysis & mitigation at Industrial level
 - ◆ Certification and assurance
- Implementation partner in Adaptation & Mitigation of GHG's
 - ◆ Field implementation projects
- Manufacturing and Marketing of Organic agricultural inputs

As a foremost business entity, we are engaged in providing an exclusive range of Agriculture and Public Health oriented products, at an affordable cost.

We Biocare India Pvt. Ltd. were established in the year 1996 and has helped establish our organization at the zenith of success. Four years of dedicated team work has fruited on 13th September 2000 as a private limited entity.

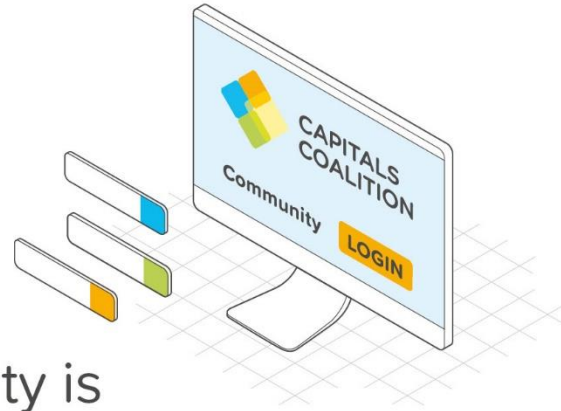
We are performers for well known brands viz; Bioforce, Neem Cake, Biosil etc that are manufactured using latest technology. With the support of novel technical facility and professional team members, we have created a niche in the industry. Today Our products are widely appreciated all over the world for their effectiveness and reliability.

POLICY

BIOCARE has established a strong foundation of integrity and compliance that helps guide employees in making good, ethical business judgments and acting with cognition. All employees are trained on our Code of Conduct to reinforce commitment and to maintain a culture of integrity. In addition, we offer a range of programs and activities to help employees see vision & to make them a good decision maker.

Thank you!

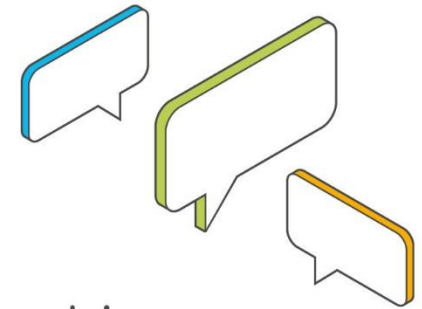




The Capitals Community is the networking space for the We Value Nature 10-Day Challenge.

Sign up and join the We Value Nature group to take part in the conversations:

<https://community.capitalscoalition.org>



We want your feedback!

Please share your thoughts on this session and the overall 10-Day Challenge event at:

<https://wevaluenature.eu/Feedback>