



# CREATING PARTNERSHIPS TO PROTECT ENDANGERED WILDLIFE

Webinar 15 March 2021

## PARTNERSHIP IN SUMATRAN TIGER CONSERVATION

### Sumatra-Wide Tiger Surveys



**HARIMAUKITA**  
sumatran tiger conservation forum



HARIYO T. WIBISONO  
SINTAS INDONESIA



VX P DWUDQ #WLJ HU#  
FR Q VHUYD WIR Q #  
OD Q GVFD SHV

93#E :3 ( #grw#surwhfwhg

J xqxqj Ohxvhu#Q S

Edwdqj J dglvQ S

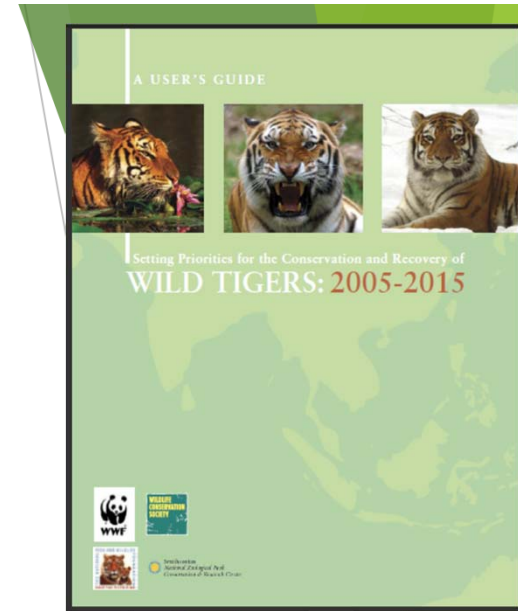
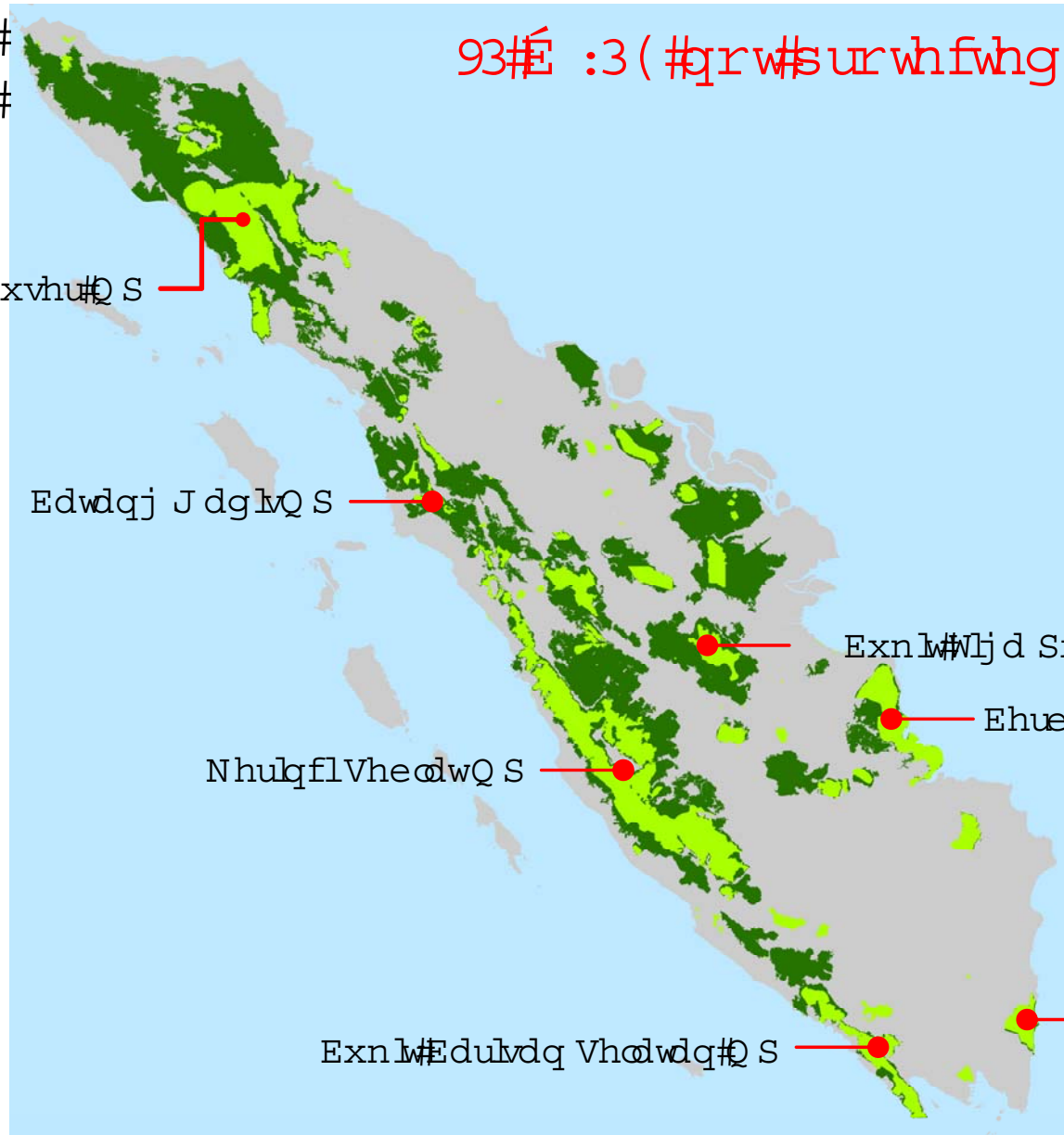
NhulqflVheawQ S

ExnW#Eduvdq Vhawdq#Q S

ExnW#Wlj d Sxawk Q S

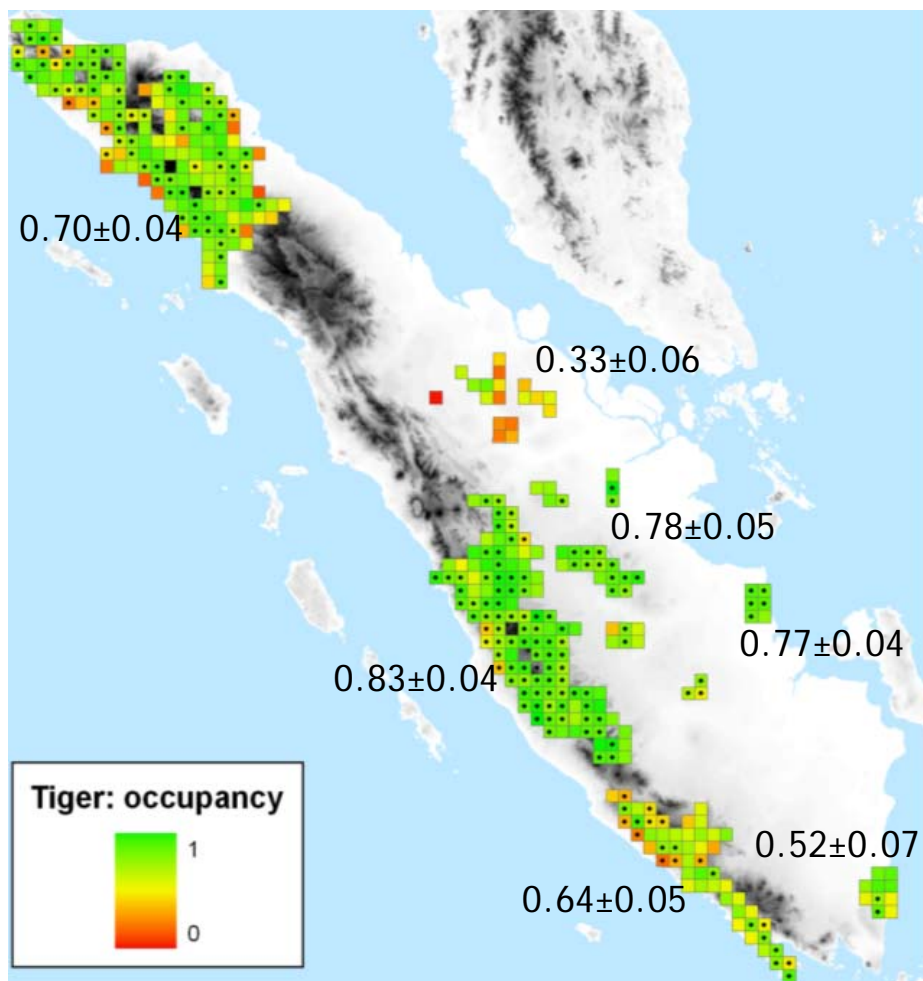
Ehuedn Vhp eldqj Q S

Z d | #Ndp edvQ S



# SUMATRA-WIDE TIGER SURVEY: 2007 - 2009

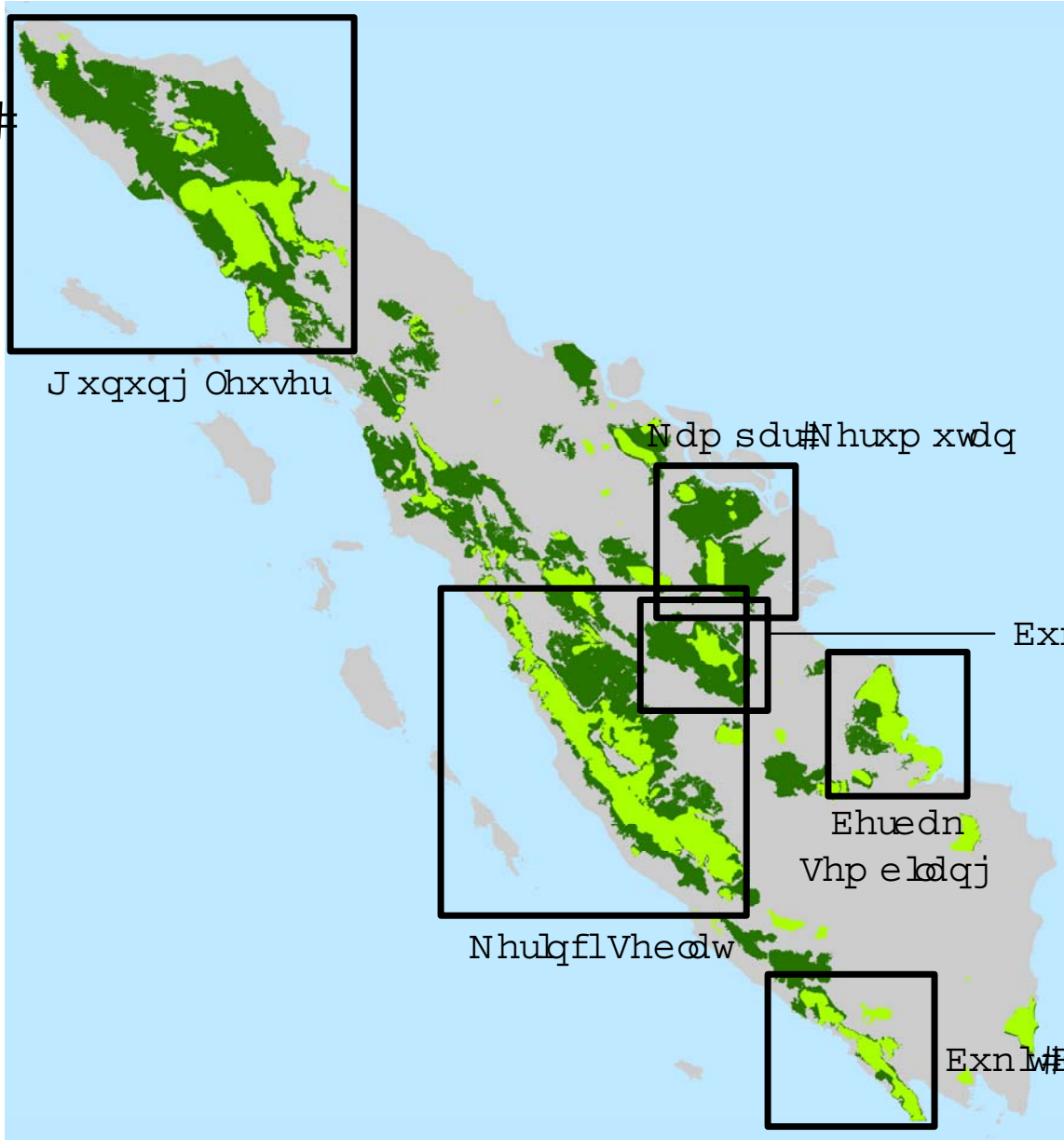
## Tiger Patch Occupancy



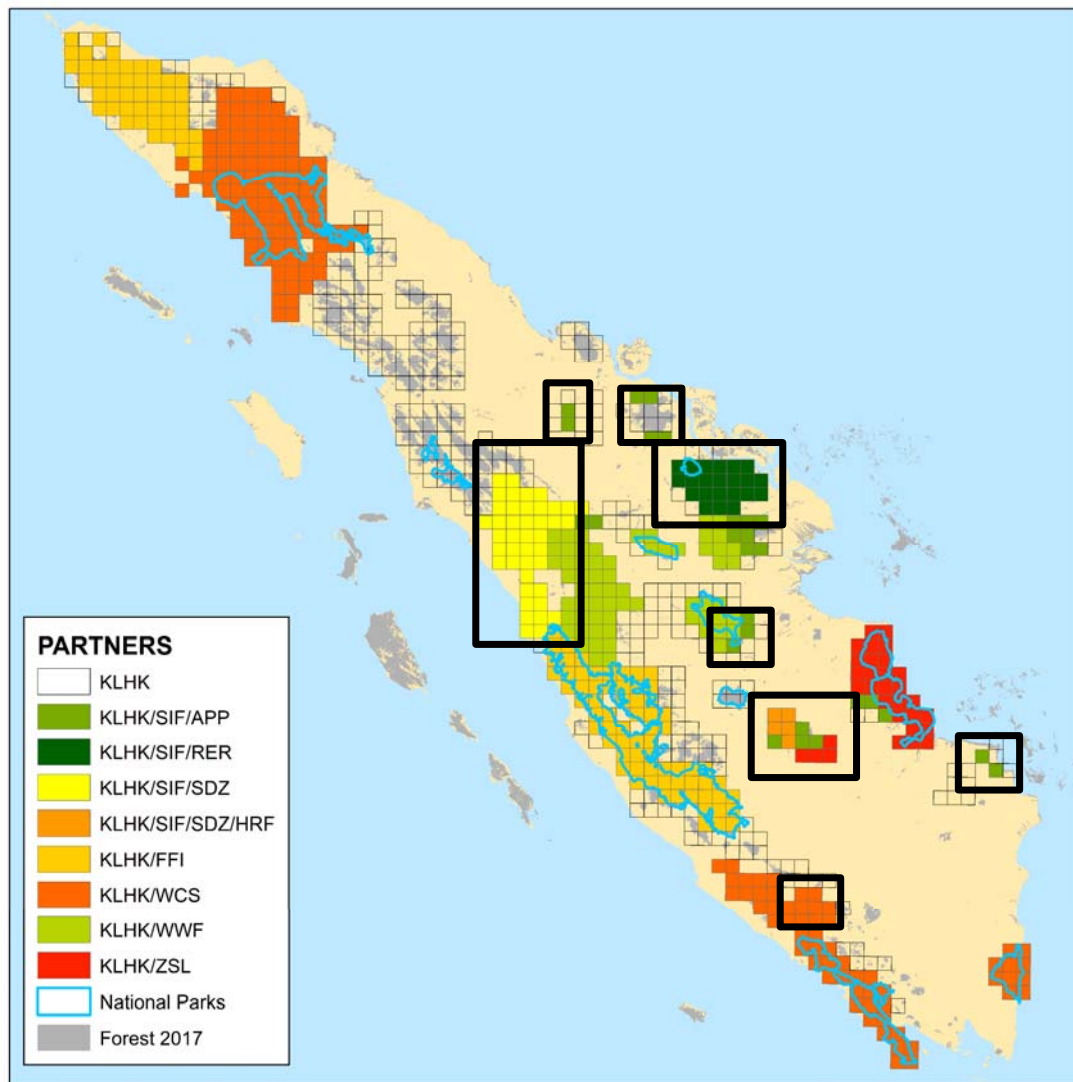
- ▶ 394 grid cells completed
- ▶ 60% of the remaining tiger habitat
- ▶ >13.500 km survey routes
- ▶ Island-wide tiger occupancy:  $0.72 \pm 0.05$



Q D W I R Q D O  
W L J H U # S U I R U I W \ #  
O D Q G V F D S H V



# SUMATRA-WIDE TIGER SURVEY: 2018 - 2021



- @12.900.000 ha
- > 35 Partners (KLHK, NGOs, Private Sectors, Donors)
- Detection/non-detection surveys
- 21 survey sites
- 76 teams (5 – 6 members/team)
- Target: Sumatran tiger and 20 other key species
- 422/712 (@17\*17 km) grid cells completed

Preparation:

Survey protocol



# PROTOKOL SURVEI OKUPANSI HARIMAU SUMATERA



Direktorat Konservasi Keanekaragaman Hayati  
Direktorat Jenderal KSDAE  
Kementerian Lingkungan Hidup dan Kehutanan

Preparation:

Survey protocol

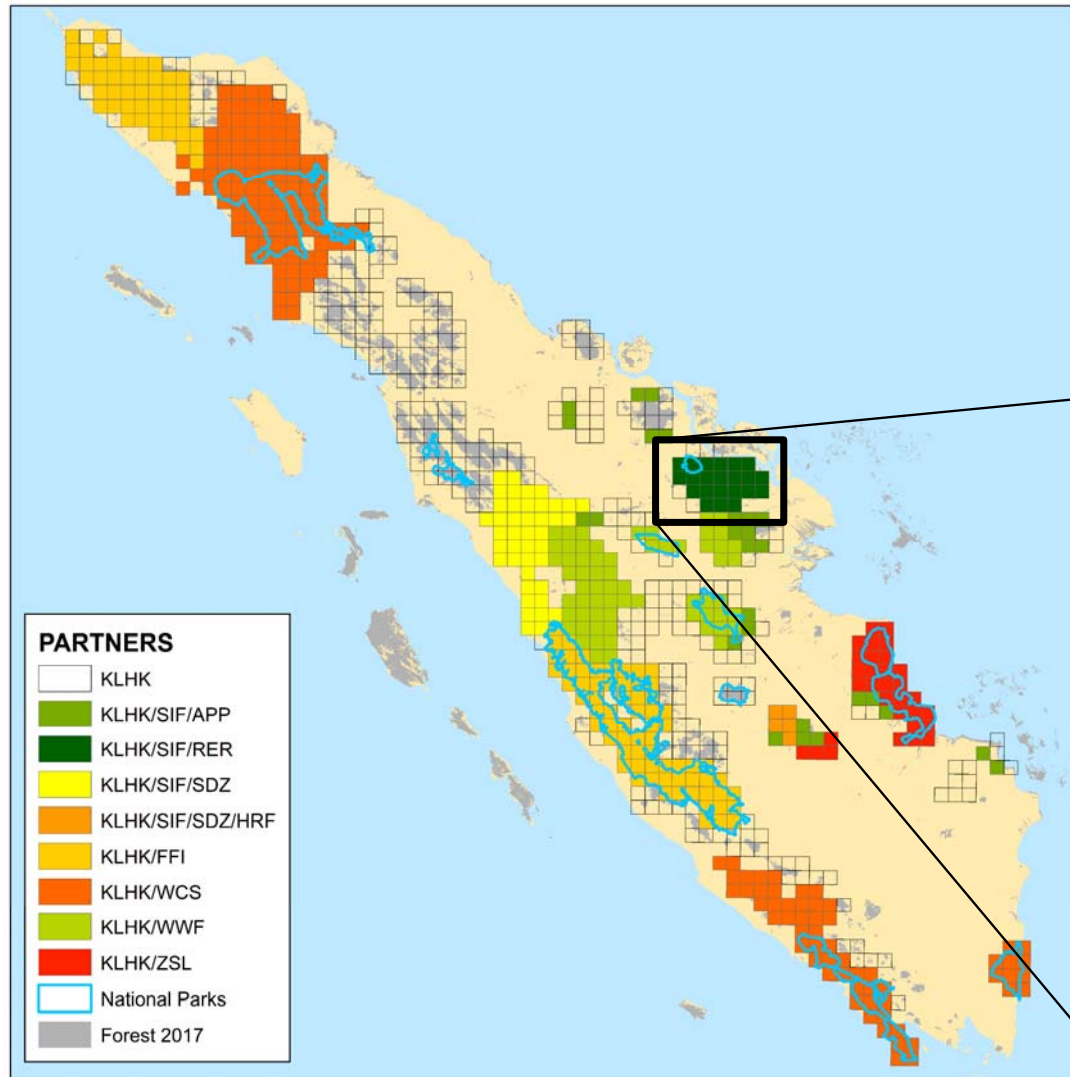
Field training



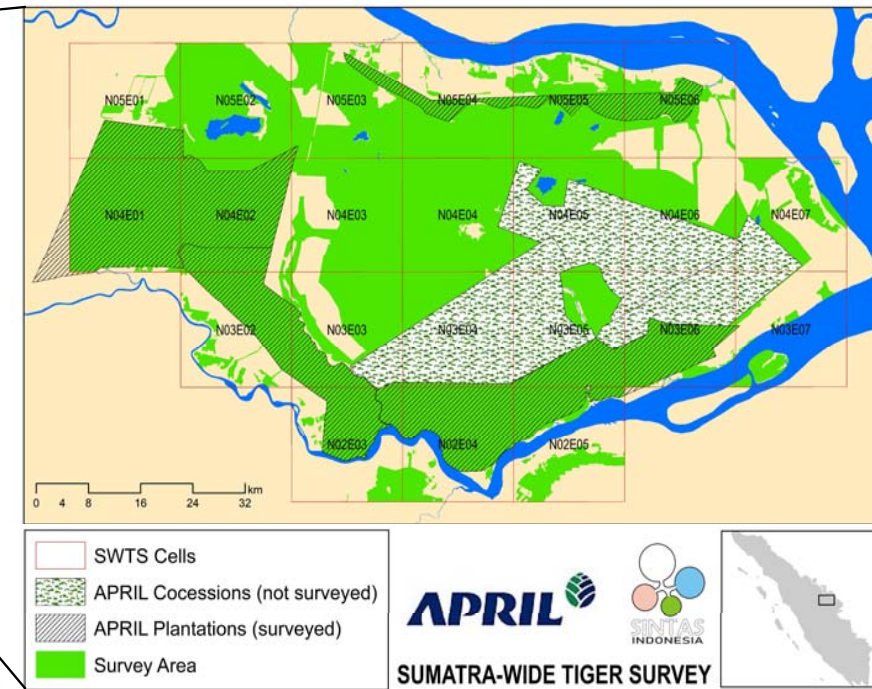
A#183#tud lqhhv



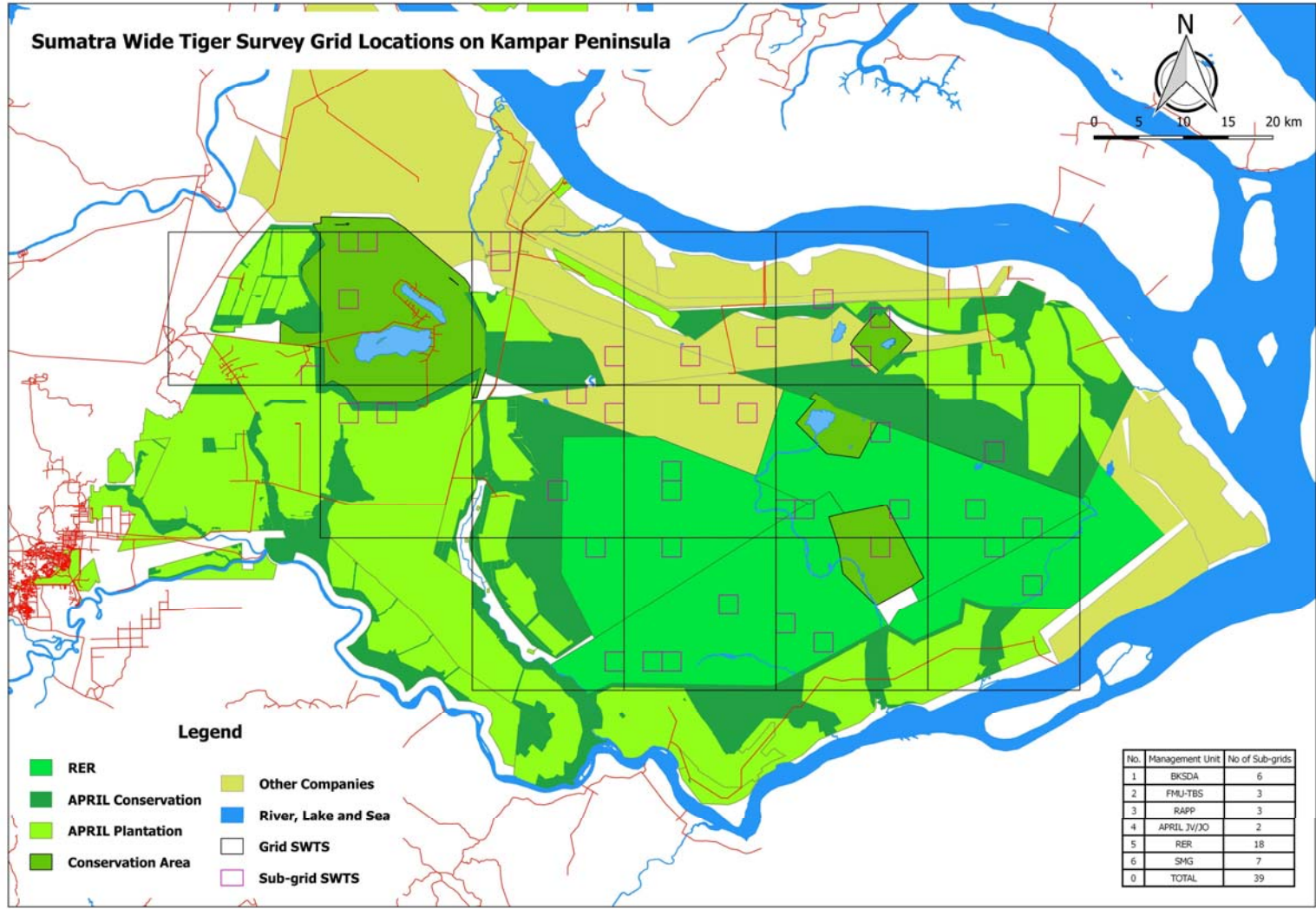
# SUMATRA-WIDE TIGER SURVEY: 2018 - 2021



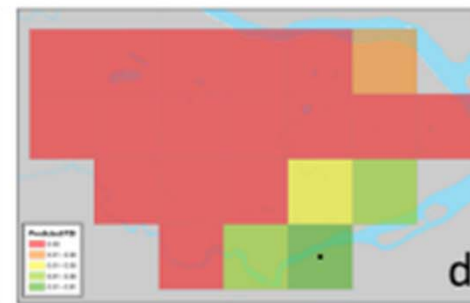
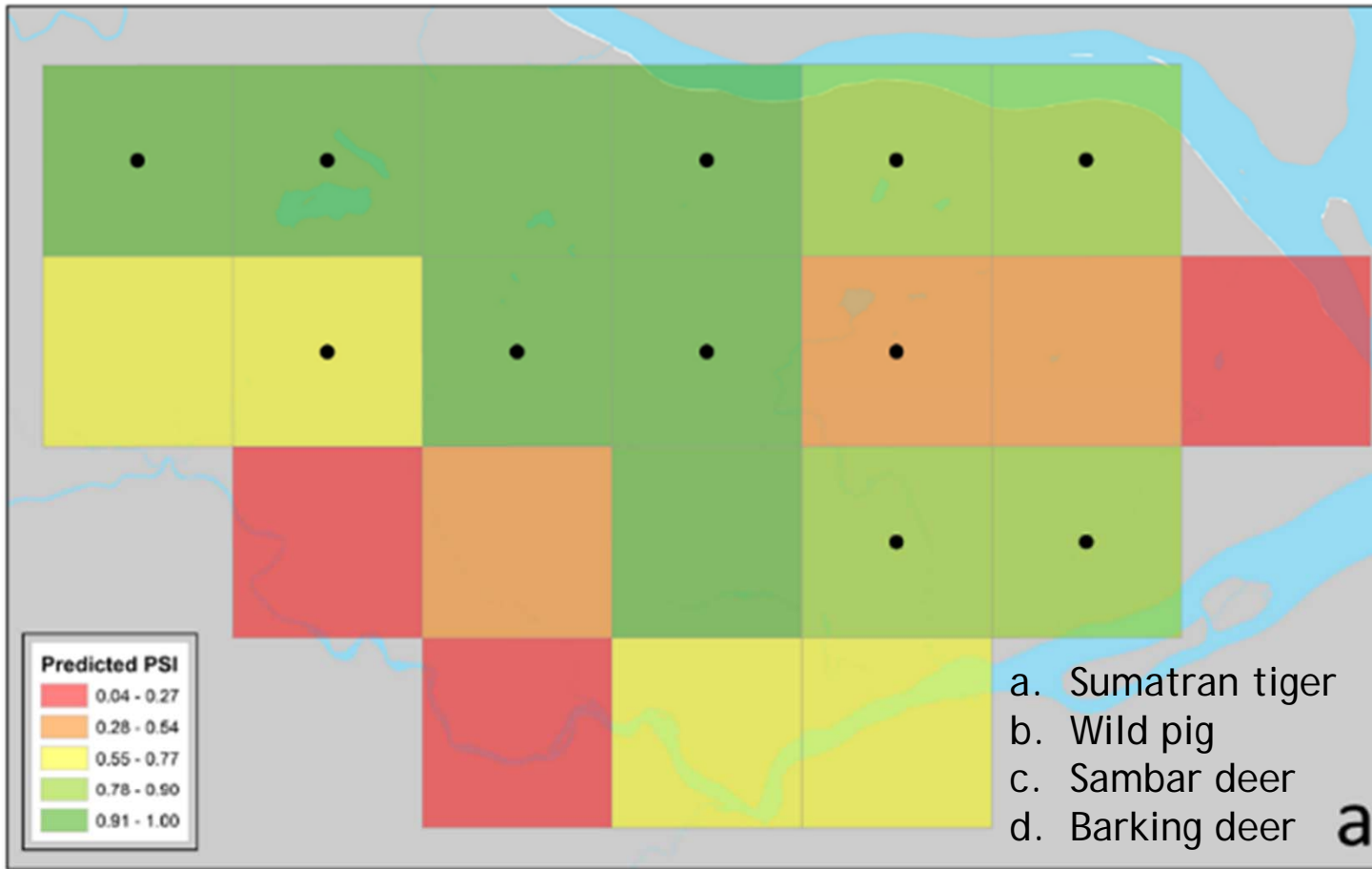
- 422/712 (@17\*17 km) grid cells completed.
- 21 grid cells in Kampar Peninsula



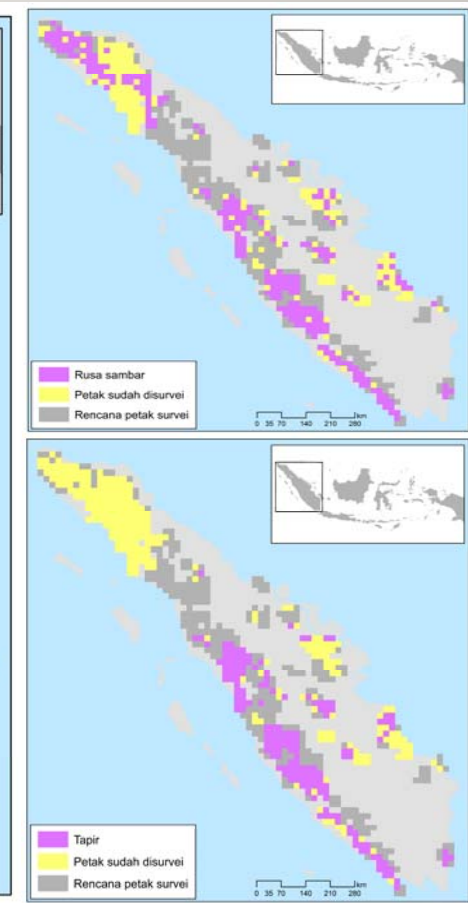
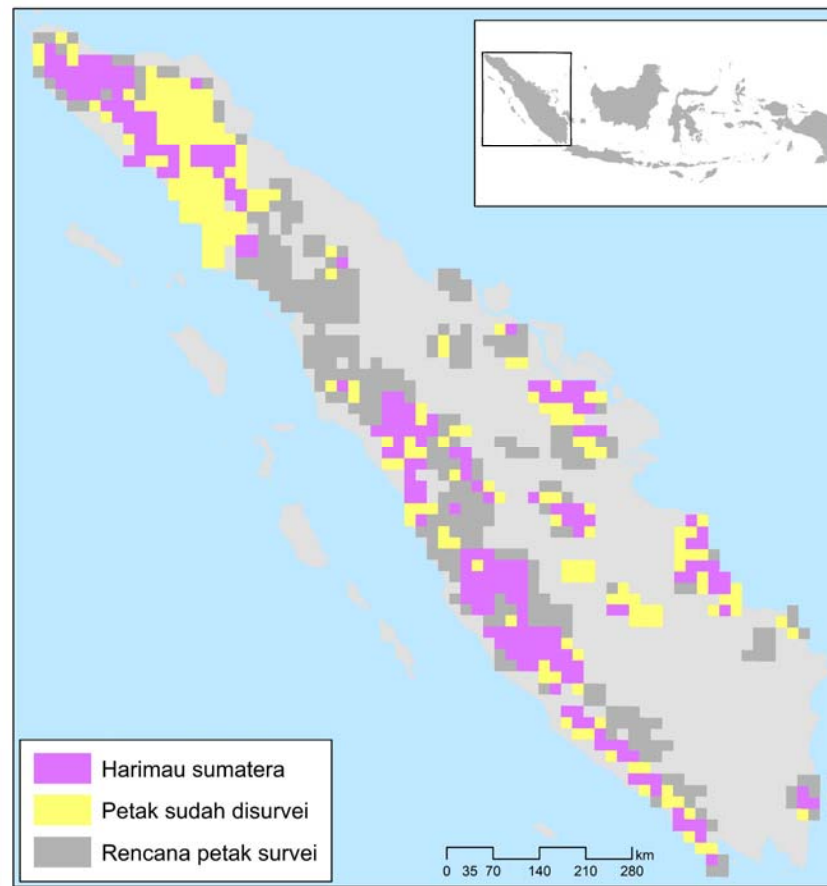
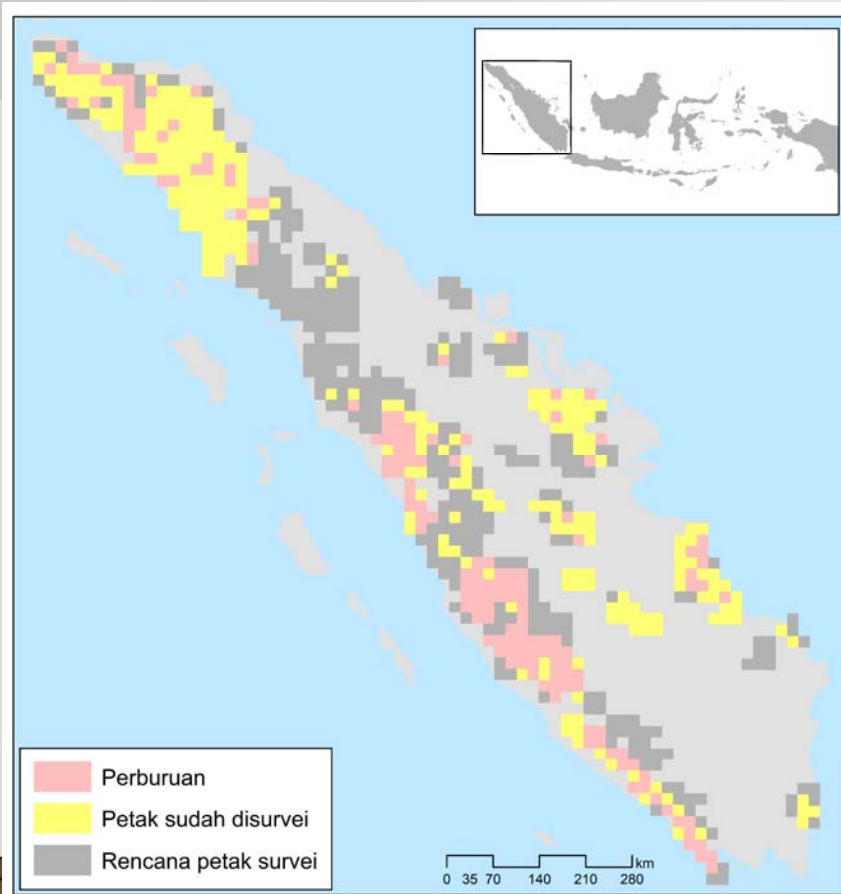




**RESTORASI EKOSISTEM RIAU**



# SUMATRA-WIDE TIGER SURVEY: 2018 – 2021 DETECTION DATASET



# > 35 PARTNERS



SUMATRA-WIDE  
**TIGER**  
SURVEY



**THANK  
YOU**



Sintas Indonesia



Sintas Ina



[www.sintas.or.id](http://www.sintas.or.id)